



ONE STEP BACKLIT LIGHTING DESIGN

Lumaire Magnetic



3 YEARS WARRANTY

APPLICATIONS

POS Display
Signage
Advertising design
Trade fairs
Retail
Interior design
Hotels

FEATURES

- Thickness is just 15mm (single or double-sided)
- Brightness up to 11000lx on the surface depending on size
- Single or double sided, curved
- Low power consumption
- Wide application possibilities, from interior design to signage
- Opal (Milky) or clear acrylic 2mm, optional
- Easy changeable image print

TECHNICAL SPECIFICATIONS

MAIN MATERIAL
Clear acrylic (PMMA)

LUMINOUS EFFICIENCY
up to 160lm/W

MAXIMUM SIZE
2450 x 1250 mm

POWER SUPPLY
DC 12V / 24V / CC Adaptor

LIGHT TRANSMISSION
93%

IP RATING
IP 20

LIFETIME
> 50,000 hours

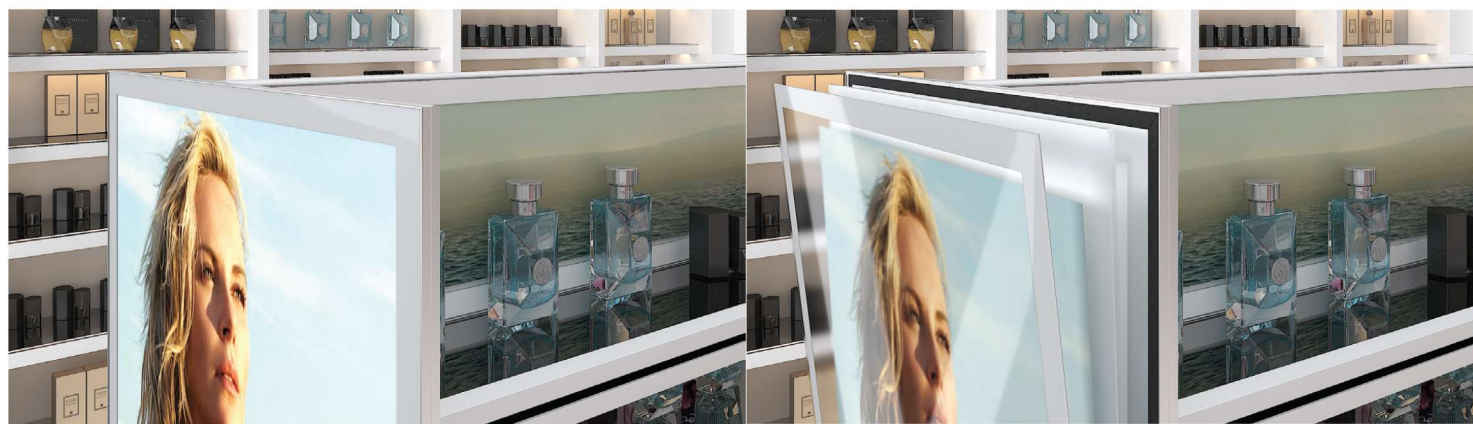
WORKING VOLTAGE
DC 12V / DC 24V / DC CC

FRAME THICKNESS
15 mm (single or double-sided)

COLOUR TEMPERATURE
3000K 4000K 5000K 6500K

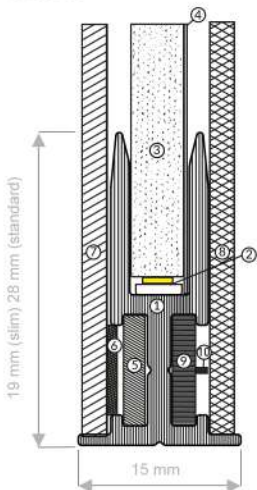
OPERATING TEMPERATURE
-30°C ~ + 40°C

INPUT VOLTAGE
AC 100 ~ 240V 50/60Hz

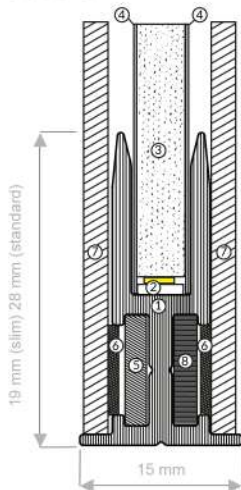


TECHNICAL DRAWING

SINGLE



DOUBLE



SINGLE

1. Frame magnetic
2. LED bar
3. Acrylic sheet
4. Reflector luminaire
5. Magnet
6. Metal strip
7. Protective acrylic sheet_ 1,5 mm thick
8. Aluminum back plate_optional
9. Brackets_L shape
10. Screw

DOUBLE

1. Frame magnetic
2. LED bar
3. Acrylic sheet
4. Difuzer luminaire
5. Magnet
6. Metal strip
7. Protective acrylic sheet_ 1,5 mm thick
8. Brackets

DIMENSIONS

PRINT SIZE, mm	VISIBLE SIZE,	EXTERNAL SIZE
500 x 700	671 x 471 mm	728 x 532 mm
1000 x 700	971 x 671 mm	1028 x 732 mm
A4	268 x 165 mm	325 x 242 mm
A3	391 x 272 mm	448 x 329 mm
A2	565 x 395 mm	622 x 452 mm
A1	812 x 569 mm	869 x 626 mm
A0	1160 x 816 mm	1217 x 873 mm
Max size	2421 x 1225 mm	2487 x 1282 mm

* Suggested Poster size should be 20mm smaller than external frame

MOUNTING INFORMATION

SIZE (Y), mm	→	←	CENTER	→	←
200-700	80 mm	80 mm			
700-1000	150 mm	150 mm			
1000-1500	150 mm	150 mm	•		
1500-2000	150 mm	150 mm		700 mm	700 mm
2000-2450	150 mm	150 mm	•	700 mm	700 mm

Holes will be drilled on both long sides (panel size (Y))
 → Pre drilled hole position from the left edge ← Pre drilled hole position from the right edge

PACKAGE INCLUDES

- Power supply (Mean well GST series power supply)
- Ceiling mounting kit CDS (for double sided panels)
- Suction cup

